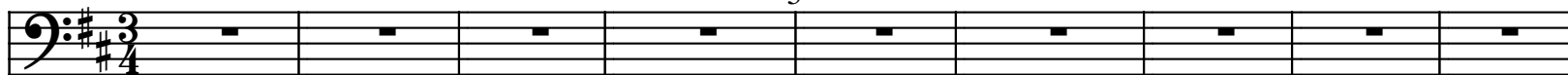
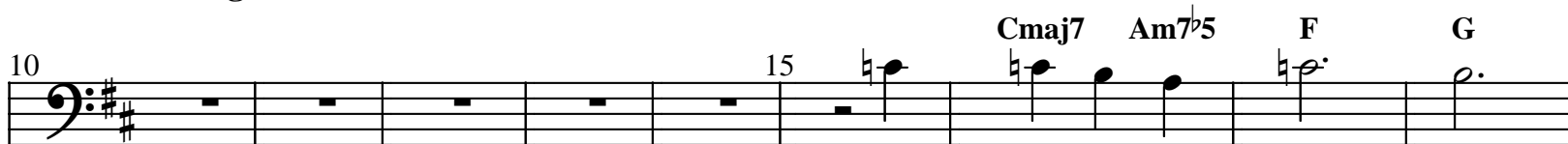


[ \_ ] Am F G6 G7 5 Am F6 F G C



## Annie's song

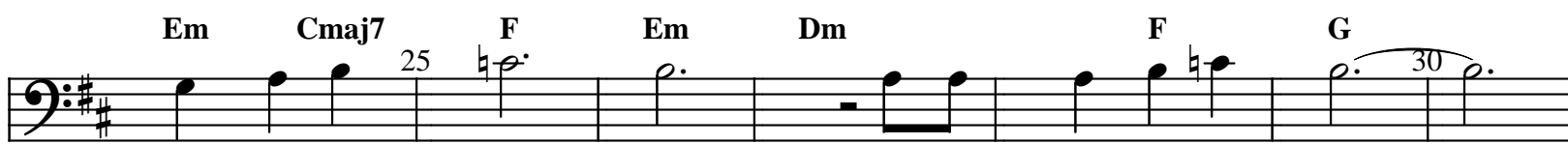


You- fill- up- my- sens- es-



Like- a- night- in- a- for- est-

Like- a-



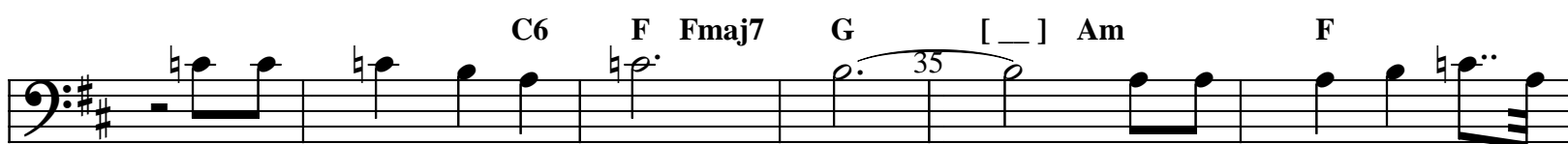
moun- tain- in-

spring- time-

Like- a-

walk- in- the-

rain-



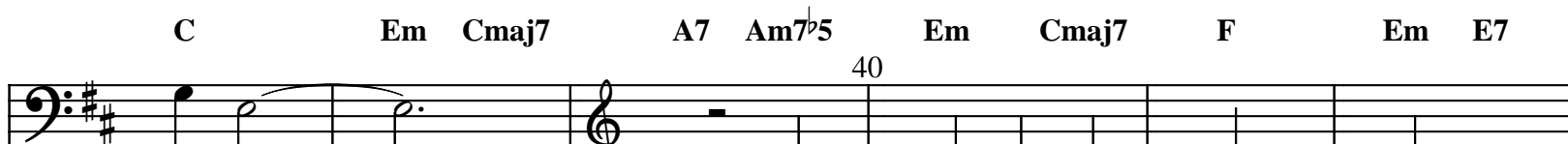
Like- a- storm- in- the-

de-

sert-

Like- a-

slee- py- blue- o-



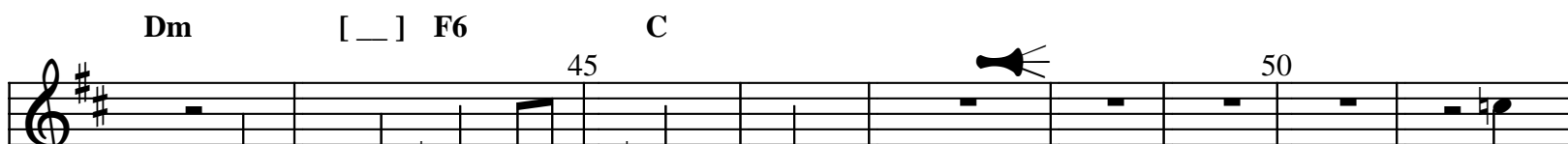
cean-

You-

fill- up- my-

sens-

es-



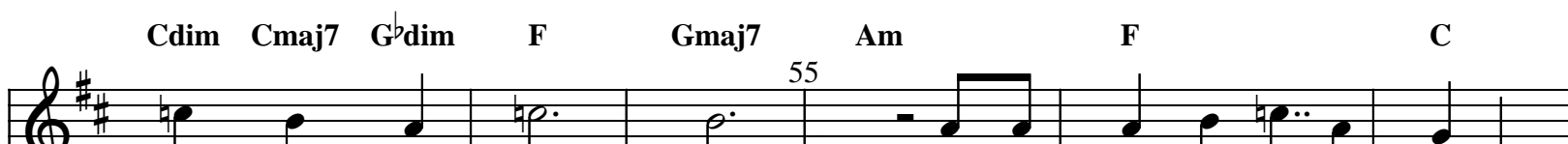
Come-

fill- me-

a-

gain-

Come-



let-

me-

love-

you-

Let- me-

give- my- life- to-

you-



Let- me-

drown- in- your-

laugh-

ter-

Let- me-

die- in- your- arms- Let- me- lay- down- be- side-

you- Let- me- al- ways- be- with- you-

Come- let- me- love- you- Come- love- me- a- gain-

You- fill- up- my- sens- es-

Like- a- night- in- a- for- est- Like- a- moun- tain- in-

spring- time- Like- a- walk- in- the- rain- Like- a-

storm- in- the- de- sert- Like- a- slee- py- blue- o- cean-

You- fill- up- my- sens- es- Come- fill- me- a-

gain-

65 70 75 80 85 90 95 100 105 110 115 120

F Gmaj7 G $\flat$ dim F Fmaj7 Gmaj7 Am F C Cmaj7 C6 Cmaj7 F Em Dm D7 F F6 C D D7 Dmaj7 D7 Gmaj7 A6 Bm Gmaj7 Dmaj7 D6 F $\sharp$ m D7 Gmaj7 F $\sharp$ m Em Gmaj7 A Dmaj7 D6 F $\sharp$ m D7 Gmaj7 F $\sharp$ m Em Gmaj7 D D7 D D7 D D7 D D7

125

D

A musical staff in treble clef with a key signature of two sharps (F# and C#). The staff contains three measures, each with a whole note. The notes are D (first line), E (second line), and F# (third line). The staff ends with a double bar line.