


15  juke- box- way- down- low- And- you- can-

to-me tell-me do-you love-me true- Or-is he hold-ing-

C G Dmin G7 C C#sus47

you- the- way- I- do- Though- love- is- blind- make- up- your-

C7 Amin C7<sub>3</sub> F Dmin F C

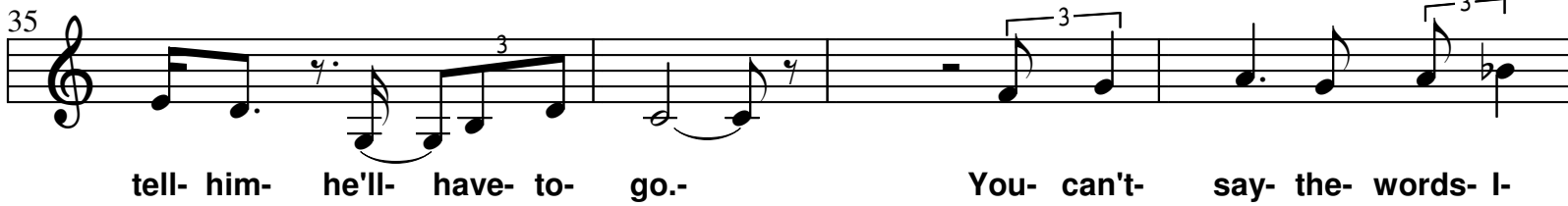
mind- I've got to know- Should- I hang up or will you-

G Bim G

C

Em7b5

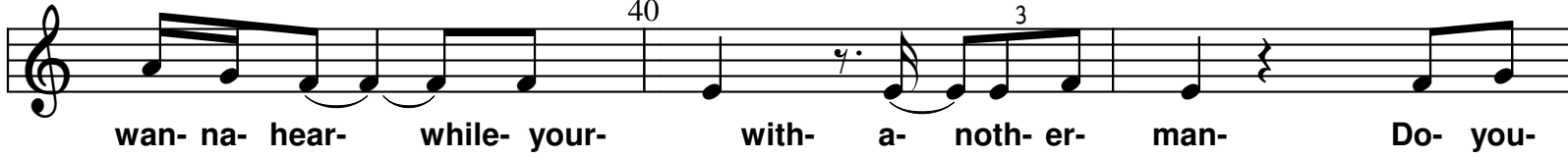
F



Fmaj7

C

Eim C Fmaj7



F

C

G Dmin G7

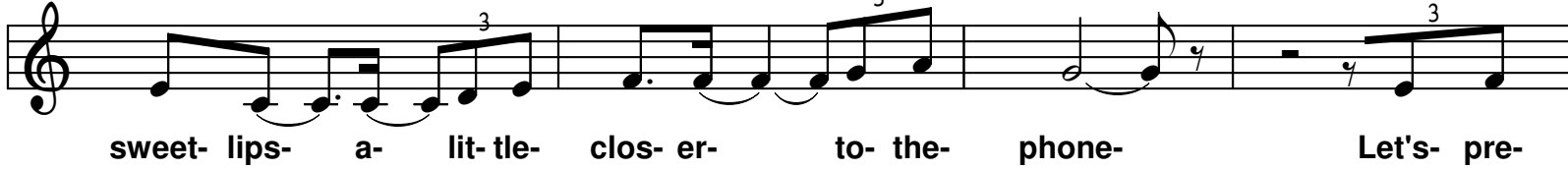


C

F

C

Fmaj7

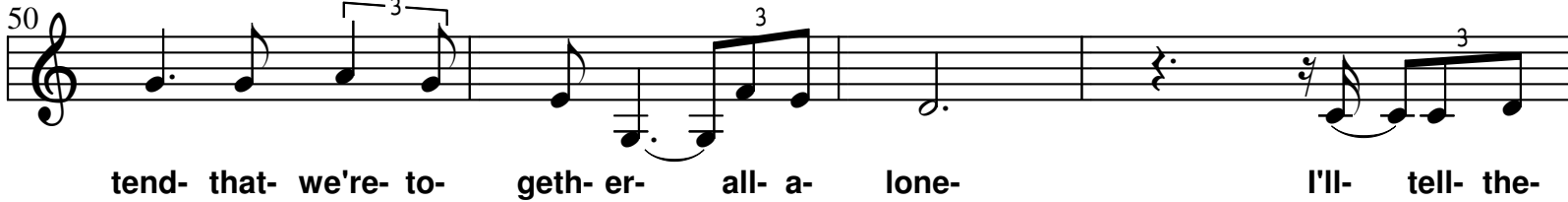


C

G7 Dmin

G7 Dmin

G7



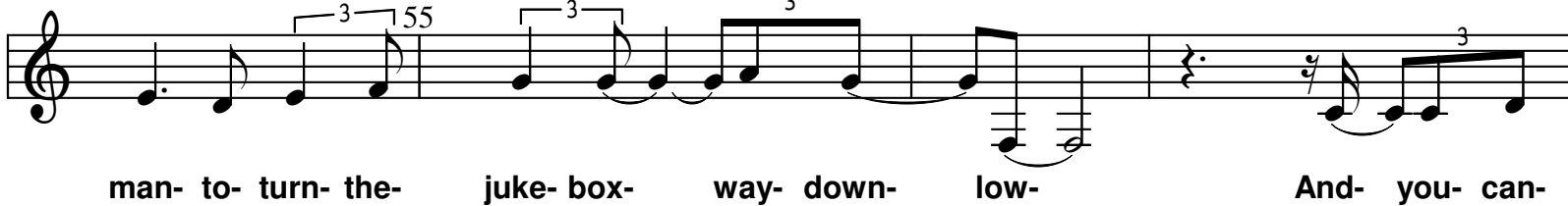
C

Amin

C7

F

Dmin

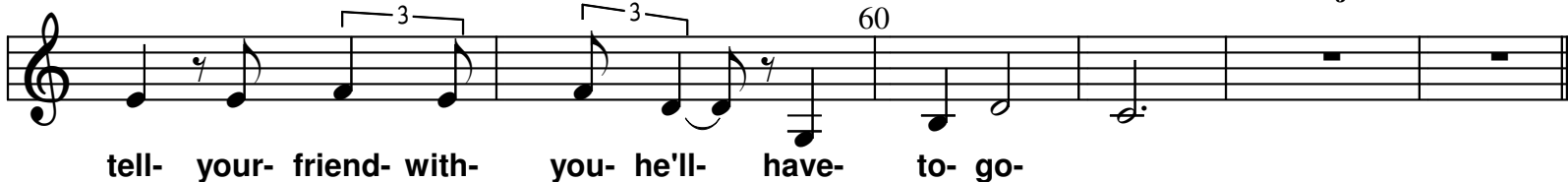


C

G7

C

Cmaj7



G Bim G

C

Em7b5

F

35

tell- him- he'll- have- to- go.- You- can't- say- the- words- I-

Fmaj7

C

Eim C Fmaj7

40

wan- na- hear- while- your- with- a- noth- er- man- Do- you-

F

C

G Dmin G7

45

want- me- answ- er- yes- or- no- Darl- ing- I- will- un- der- stand- Put- your-

C

F

C

Fmaj7

sweet- lips- a- lit- tle- clos- er- to- the- phone- Let's- pre-

C

G7 Dmin

G7 Dmin

G7

50

tend- that- we're- to- geth- er- all- a- lone- I'll- tell- the-

C

Amin

C7

F

Dmin

55

man- to- turn- the- juke- box- way- down- low- And- you- can-

C

G7

C

Cmaj7

60

tell- your- friend- with- you- he'll- have- to- go-