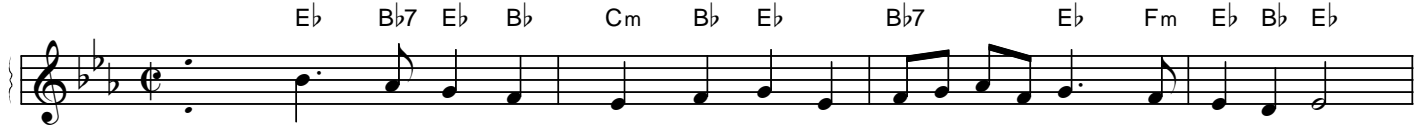


Deck the Hall

words: traditional English

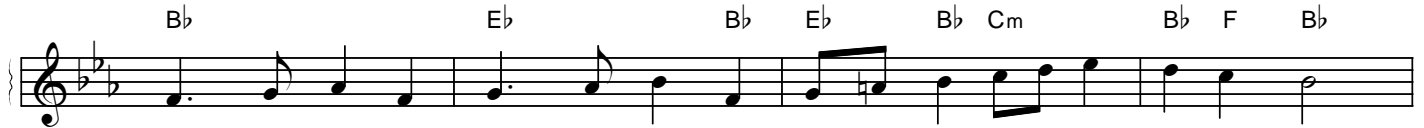
tune: *Nos Galan*, traditional Welsh



Deck the hall with boughs of hol - ly,
See the blaz - ing Yule be - fore us, fa la la la la la la la la.
Fast a - way the old year pas - ses,



Tis the sea - son to be jol - ly,
Strike the harp and join the chor - us, fa la la la la la la la la.
Hail the new, ye lads and las - ses,



Don we now our gay ap - par - el,
Fol - low me in mer - ry meas - ure, fa la la la la la la la la.
Sing we joy - ous all to - geth - er,



Troll the an - cient Yule - tide car - ol,
While I tell of Yule - tide treas - ure, fa la la la la la la la la.
Heed - less of the wind and weath - er,